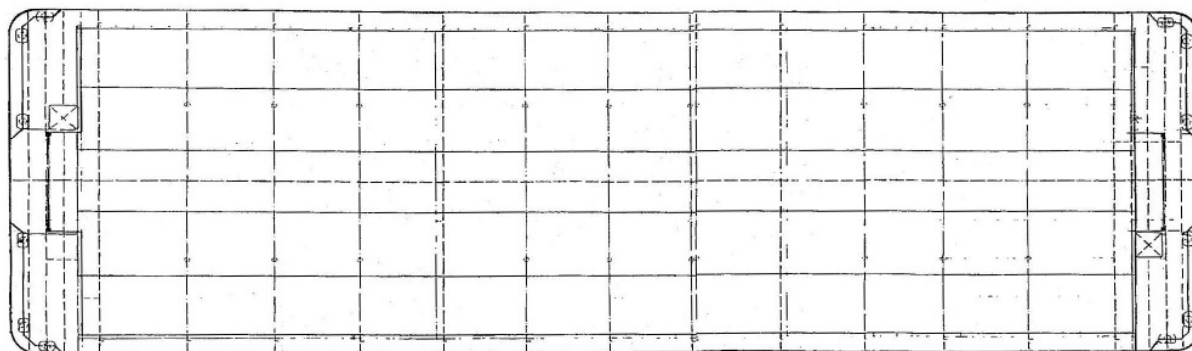
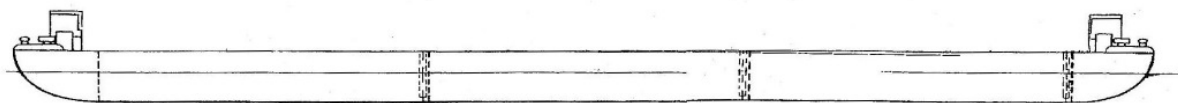


# Ponton "P1"



<b>Length:</b>	<b>35,0 m</b>
<b>Beam:</b>	<b>11,2 m</b>
<b>Draught:</b>	<b>1,70 m</b>
<b>Draft empty:</b>	<b>0,35 m</b>
<b>Draft full:</b>	<b>1,10 m</b>
<b>Loading capacity:</b>	<b>250 tons</b>
<b>GRT:</b>	<b>196,46</b>
<b>NRT:</b>	<b>191,55</b>
<b>Deadweight:</b>	<b>235 tons</b>
<b>Class:</b>	<b>GL +100 A4 pontoon</b>
<b>Deck cargo area:</b>	<b>310 m<sup>2</sup></b>