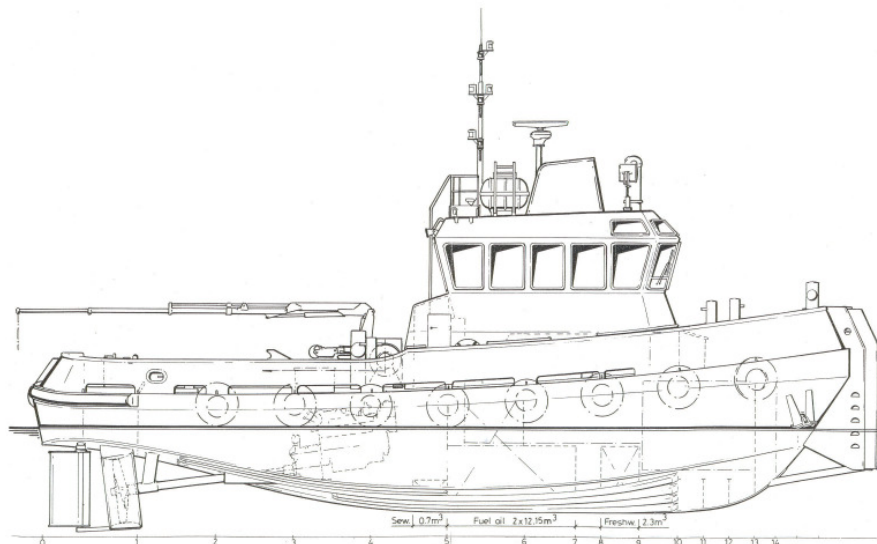


# TUG "Hans"



**BUILT**  
**POWER OUTPUT**  
**MAXIMUM SPEED**  
**BOLLARD PULL**  
**MAIN ENGINES**

**GEAR BOXES**  
**AUXILIARY ENGINES**

**LENGTH**  
**BEAM**  
**DEPTH**  
**DRAFT**  
**CALL SIGNAL**  
**GRT/NRT**

**BUNKER CAPACITY**  
**PORTABLE WATER**  
**TOWING WINCH**  
**ACCOMODATION**  
**CLASSIFICATION**  
**NAVIGATION AID**

**PARTICULARS**

**MOBILE PHONE**  
**MOBILE FAX**

**1998 Damen Shipyards, Hardinxveld**

**1460 hp**

**11,5 knots**

**22 tons**

**2 x Carterpillar diesel, type 3412C TA**

**1074 KW / 1800 RPM**

**2 x Reintjes WAF 363L/ 4.9:1**

**2 x Lister CRK 3/Stamford UCM**

**31,5 kVA, 220/380 V**

**19,50 m**

**6,20 m**

**2,60 m**

**2,40 m**

**DIVX**

**70 / 21 tons**

**28,0 to.**

**3,0 to.**

**25 to. / 350 m**

**1 x 2 crew cabin, 2 x 1 crew cabin, fully airconditioned**

**100 A5 K Tug MC E**

**Furuno FR-8031 DA radar, Robertsons AP 45 autopilot,**

**2 x Sailor RT 2048 (VHF), Furuno FE-606 echo sounder**

**GPS navigator GP 70 , Navtex receiver, DGPS, Electrical**

**Chart System.**

**highly manoeuvrable tug, extremely suitable to work in confined area's. Her limited draught comparing with the tugs capacity makes her popular on contractor sites and for harbour towage.**

**0171 - 72 75 29 2**

**0171 - 72 01 23 3**